


NTFSDOS Professional™

Ideal for accessing NTFS volumes from MS-DOS

 NTFSDOS Professional allows you to access the NTFS volumes on a Windows NT/2000/XP/Server 2003® system that is unbootable due to damaged, missing, or misconfigured system files.

By using NTFSDOS Professional with an MS-DOS® boot diskette you can access NTFS volumes from a DOS prompt to quickly and efficiently restore your system to bootable condition. NTFSDOS Professional provides unrestricted read/write access to the NTFS partitions, providing an environment in which you can run third-party applications such as virus scanners or ghosting software.

The NTFSDOS Professional Advantage:

Ease of use

NTFSDOS Professional is a model of simplicity, giving you full access to your NTFS volumes from a familiar command line interface.

Flexibility

NTFSDOS Professional allows you to use third-party software applications within the NTFSDOS Professional boot environment.

Cost efficiency

With NTFSDOS Professional, you'll be able to quickly and efficiently repair systems, eliminating the need for time-consuming system reinstallations and restoration from tape backup.

```
A:\>ntfschk g: /f
NTFSCHK v5.00
Copyright (C) 1999-2003 Winternals Software LP
www.winternals.com

Checking file system on G:
The type of the file system is NTFS.
Volume label is WinXP.

CHKDSK is verifying files (stage 1 of 3)...
File verification completed.
CHKDSK is verifying indexes (stage 2 of 3)...
Index verification completed.
CHKDSK is verifying security descriptors (stage 3 of 3)...
Security descriptor verification completed.

2048255 KB total disk space.
1556358 KB in 6977 files.
1808 KB in 687 indexes.
0 KB in bad sectors.
20465 KB in use by the system.
12384 KB occupied by the log file.
469624 KB available on disk.

2048 bytes in each allocation unit.
1024127 total allocation units on disk.
234812 allocation units available on disk.
Windows has finished checking the disk.
```

NTFSDOS Features:

■ ANTI-VIRUS COMPATIBILITY —

Works with many DOS anti-virus tools to safely remove viruses. Systems booted using the NTFSDOS Professional diskettes bypass the Windows installation on the infected system for safe, off-line cleaning.

■ NTFSCCHK CAPABILITY —

Run the Windows XP/2000/NT4 NTFSCCHK Check Disk program from within MS-DOS. NTFSCCHK enables you to verify and repair the NTFS disk structure in case of accidental corruption, and ensures that volumes are clean before being accessed.

■ LONG FILE NAME SUPPORT —

Supports long file names on NTFS partitions and when copying or moving data between NTFS partitions so you do not lose any information.

■ COMPATIBILITY —

Uses the same file system drivers that Windows NT 4, 2000, and XP use, to ensure compatibility.

Winternals Product Assurance

Winternals Product Assurance is a cost-effective way to maximize the value of your organization's investment in Winternals products. Winternals Product Assurance delivers three powerful benefits — software maintenance, telephone support, and price protection — all with one cost-effective purchase.

Telephone Support

- Exclusive access to Winternals telephone technical support

Software Maintenance

- Free access to new releases of your covered products
- Automatic notification about updates, patches, and fixes to existing versions of your covered products
- Early access to beta versions of new products

Price Protection

- Price protection to ensure future product purchases at the same discount as your original volume price

To order Product Assurance, or if you require a quote, please call

1-800-408-8415

or e-mail

sales@winternals.com.



SYSTEM REPAIR



DATA RECOVERY



TROUBLESHOOTING

Winternals®

NTFSDOS Professional

■ HIGH PERFORMANCE —

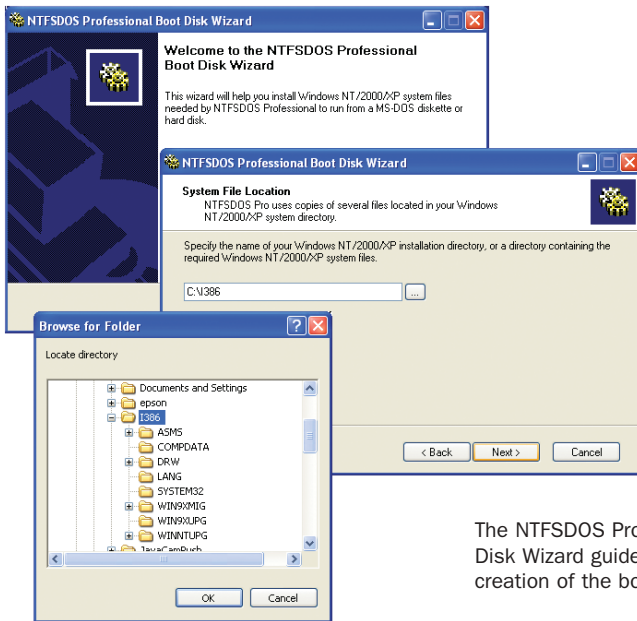
Because the driver is coded as a 32-bit protected-mode program running under MS-DOS, performance is maximized.

■ REPAIR INSTALLATIONS —

Repair unbootable Windows XP/2000/NT4 workstations by deleting problematic drivers, editing configuration files such as BOOT.INI, or replacing corrupt or missing system files.

System Requirements

NTFSDOS Professional requires a working Windows XP/2000/NT4 Workstation or Server installation, a licensed MS-DOS 7.0 or higher boot diskette, and 2 to 3 blank diskettes. NTFSDOS Professional does not recognize software volume sets, striped sets, or mirror sets.



The NTFSDOS Professional Boot Disk Wizard guides you through the creation of the boot diskettes.

Licensing

Winternals NTFSDOS Professional is licensed by node. The license is designed so that NTFSDOS Professional will only function within domains specified on your activation key. In the event that you have machines that are not part of a domain, NTFSDOS Professional can also be locked to a specific machine name.

For additional information on Winternals licensing, please contact your Account Executive at

1-800-408-8415

or at

sales@winternals.com.

"Overall, NTFSDOS Pro is efficient, powerful, and extremely easy to use. The potential time and money savings make NTFSDOS Professional a worthwhile buy and a useful addition to Win2K and NT administrators' toolkits."

Michael Schlei
Windows & .NET Magazine

Winternals®

3101 Bee Caves Road
Suite 150

Austin, TX 78746

www.winternals.com

Ph 512.330.9130

Fax 512.330.9131

Sales 800.408.8415